

Thomasville[®]

CABINETS

ElementsCollection

EFFECTIVE NOVEMBER 2022

Supersedes all prior versions

DESIGNER SPECIFICATION GUIDE

Elements Collection

Your Elements Collection user experience is our priority. The Elements Collection Designer Specification Guide features hyperlink navigation, so you can quickly locate product specific to your project.

- The Indexes contain links to each unique product.
- The main Table of Contents contains links to the beginning of each section.
- The secondary Table of Contents at the beginning of each section contains links to product subcategories.
- Return to the beginning of each section by clicking on the title inside the black tab.
- Return to the main Table of Contents at any time by clicking on Elements Collection at the bottom of each page.

If your preferred PDF search method is holding the Control and F keys and populating the search box with item codes or words, we've got you covered.

No matter how you choose to use this resource, we're glad you're specifying Elements Collection!

TABLE OF CONTENTS

Index by Description	2
Index by Code	3
Policies and Procedures	4-5
Door Styles	6
Product Specifications	7-12
Wall Cabinets	13-33
Base Cabinets	34-44
Universal Access Cabinets	45-50
Tall Cabinets	51-57
Vanity Cabinets	58-62
Fillers	63-65
Skins	66-67
Panels	68-70
Mouldings	71-77
Accessories	78-82
Hinges	83-85

Description	Code	Page	Description	Code	Page
3" Filler	F3_ _, TF396FH	64	Partial Overlay Hinge	38NPOHINGE	83
6" Filler	F6_ _, TF696FH	65	Roll Tray Kits	RT_ _WD	79
Accent Moulding, Flat Scribe	SM8	73	Single Oven Three Drawers	OC3D33_ _24	56
Accent Moulding, Light Baffle	LB2	74	Sink Base	SB	40
Accent Moulding, Small Scribe	SSM8	74	Stain & Paint	QUARTCOLOR, SSC	82
Angled Corner Sink Front Bottom	ACSF	41	Starter Moulding, Shaker	STRS8	73
Angled Corner Sink Front without Sink Floor	ACSF	41	Straight Valance / Baseboard	VV_ _	77
Base and Tall Panels with Filler Attached	BEPF1.5LAM, BEPF3LAM, TEP2496F1.5, TEP3096F1.5	69	Super Lazy Susan	SLS36R	43
Base Built-in Microwave Cabinet with Drawer	BBMWD	39	Tall End Panels	TEP2484LAM, TEP2496LAM, TEP3096LAM	68
Base Corner Single Door	BC_ _S	42	Three Drawer Base	3DB	38
Base Decorative Door End Panel Kit, Single Door	BEDSD	70	Tilt-out Trays	TOT_ _	80
Base Double Door	B	36	Toeboard	TB8LAM18, TB8LAM14	76
Base Double Door - Full Height	B_ _FH	37	Touch-up Kit	TUK	82
Base Easy Reach	BER_ _R	43	Two Drawer Base	2DB	37
Base Lazy Susan	BLS36R	44	Universal Access, Base Built-in Microwave Cabinet with Drawer	BBMWD3032.5	47
Base Single Door	B_ _R	35	Universal Access, Base Corner Single Door	BC_ _32.5S	49
Base Single Door - Full Height	B_ _FHR	36	Universal Access, Base Double Door	B_ _32.5	46
Base Wastebasket	BWB	39	Universal Access, Base Single Door	B_ _32.5R	46
Bumper Pads	BUMPERPADS	80	Universal Access, Base Sink Removable	BSR_ _32.5	48
Corner Moulding, Inside Corner	ICM8	75	Universal Access, Super Lazy Susan	SLS3632.5R	50
Corner Moulding, Outside Corner	OCM8	75	Universal Access, Three Drawer Base	3DB_ _32.5	47
Corner Moulding, Quarter Round	QRM	76	Universal Access, Vanity Base Sink Removable	VBSR_ _32.521	48
Country Sink Base	CNTYSB	40	Utility Double Door	U_ _ _ _24	54
Crown Moulding, Cove Crown	COVECROWN8	72	Utility Single Door	U18_ _24R	52
Crown Moulding, Small Cove Crown	SMCOVECROWN8	72	Vanity Base Single Door	VB_ _3421R	60
Crown Moulding, Solid Wood Crown	SWCRM8	71	Vanity Drawer Base	VDB_ _32.521	59
Crown Moulding, Solid Wood Large Crown	SWLCRM8	71	Vanity Drawer Base	VDB_ _3421	61
Diagonal Wall	DW_ _ _ _ _R	32	Vanity Sink Base	VSB_ _32.521	59
Diagonal Wall Cut-for-glass	DWCG	33	Vanity Sink Base	VSB_ _3418	60
Drawer Guide Kits	DGK_ _PG	81	Vanity Sink Base	VSB_ _3421	61
End Panel Skins	WEPS42LAM14, BEPS34.514, TEPS96LAM14	66	Vanity Sink Drawer Base	2VSD_ _3421	62
Finished Back Skins	BP4834.514, BP4896LAM14	67	Vanity Sink Drawer Base	3VSD_ _3421	62
Full Overlay Hinge, 4-way	38BFOVHINGE	84	Wall Corner Double Door	WC_ _ _ _S	30
Full Overlay Hinge, 6-way	38CFOHINGE	83	Wall Corner Single Door	WC_ _ _ _S	29
Hinge Angle Restriction Clip	HINGERESCLIP	84	Wall Cut-for-glass	WCG	24
Hinge Shim	HINGESHIM5	85	Wall Decorative Door End Panel Kit	WED	70
Mini Touch-up Kit	MTUK	82	Wall Double Door	W	14
			Wall Single Door	W_ _ _ _R	15

Code	Description	Page	Code	Description	Page
2DB	Two Drawer Base	37	OC3D33__24	Single Oven Three Drawers	56
2VSD__3421	Vanity Sink Drawer Base	62	OCM8	Corner Moulding, Outside Corner	75
38BFOVHINGE	Full Overlay Hinge, 4-way	84	QRM	Corner Moulding, Quarter Round	76
38CFOHINGE	Full Overlay Hinge, 6-way	83	QUARTCOLOR	Stain & Paint	82
38NPOHINGE	Partial Overlay Hinge	83	RT__WD	Roll Tray Kits	79
3DB	Three Drawer Base	38	SB	Sink Base	40
3DB__32.5	Universal Access, Three Drawer Base	47	SLS3632.5R	Universal Access, Super Lazy Susan	50
3VSD__3421	Vanity Sink Drawer Base	62	SLS36R	Super Lazy Susan	43
ACSF	Angled Corner Sink Front without Sink Floor	41	SM8	Accent Moulding, Flat Scribe	73
ACSF8	Angled Corner Sink Front Bottom	41	SMCOVECROWN8	Crown Moulding, Small Cove Crown	72
B	Base Double Door	36	SSC	Stain & Paint	82
B__32.5	Universal Access, Base Double Door	46	SSM8	Accent Moulding, Small Scribe	74
B__32.5R	Universal Access, Base Single Door	46	STRS8	Starter Moulding, Shaker	73
B__FH	Base Double Door - Full Height	37	SWCRM8	Crown Moulding, Solid Wood Crown	71
B__FHR	Base Single Door - Full Height	36	SWLCRM8	Crown Moulding, Solid Wood Large Crown	71
B__R	Base Single Door	35	TB8LAM14	Toeboard	76
BC__32.5S	Universal Access, Base Corner Single Door	49	TB8LAM18	Toeboard	76
BC__S	Base Corner Single Door	42	TEP2484LAM	Tall End Panel	68
BBMWD	Base Built-in Microwave Cabinet with Drawer	39	TEP2496F1.5	Tall Panel with Filler Attached	69
BBMWD3032.5	Universal Access, Base Built-in Microwave Cabinet with Drawer	47	TEP2496LAM	Tall End Panel	68
BEDSD	Base Decorative Door End Panel Kit, Single Door	70	TEP3096F1.5	Tall Panel with Filler Attached	69
BEPF1.5LAM	Base Panel with Filler Attached	69	TEP3096LAM	Tall End Panel	68
BEPF3LAM	Base Panel with Filler Attached	69	TEPS96LAM14	End Panel Skins	66
BEPS34.514	End Panel Skins	66	TF396FH	3" Filler, Tall	64
BER__R	Base Easy Reach	43	TF696FH	6" Filler, Tall	65
BLS36R	Base Lazy Susan	44	TOT__	Tilt-out Trays	80
BP4834.514	Finished Back Skins	67	TUK	Touch-up Kit	82
BP4896LAM14	Finished Back Skins	67	U___24	Utility Double Door	54
BSR__32.5	Universal Access, Base Sink Removable	48	U18__24R	Utility Single Door	52
BUMPERPADS	Bumper Pads	80	VB__3421R	Vanity Base Single Door	60
BWB	Base Wastebasket	39	VBSR__32.521	Universal Access, Vanity Base Sink Removable	48
CNTYSB	Country Sink Base	40	VDB__32.521	Vanity Drawer Base	59
COVECROWN8	Crown Moulding, Cove Crown	72	VDB__3421	Vanity Drawer Base	61
DGK__PG	Drawer Guide Kits	81	VSB__32.521	Vanity Sink Base	59
DW_____R	Diagonal Wall	32	VSB__3418	Vanity Sink Base	60
DWCG	Diagonal Wall Cut-for-glass	33	VSB__3421	Vanity Sink Base	61
F3__	3" Filler	64	VV__	Straight Valance / Baseboard	77
F6__	6" Filler	65	W	Wall Double Door	14
HINGERESCLIP	Hinge Angle Restriction Clip	84	W___R	Wall Single Door	15
HINGESHIM5	Hinge Shim	85	WC___S	Wall Corner Double Door	30
ICM8	Corner Moulding, Inside Corner	75	WC___S	Wall Corner Single Door	29
LB2	Accent Moulding, Light Baffle	74	WCG	Wall Cut-for-glass	24
MTUK	Mini Touch-up Kit	82	WED	Wall Decorative Door End Panel Kit	70
			WEPS42LAM14	End Panel Skins	66

HOME DELIVERY PROGRAM - GUIDELINES

- Home deliveries will be completed to the consumer Monday through Friday between the hours of 8:00 a.m. and 8:30 p.m. and Saturday from 8:00 a.m. to 4:30 p.m. Deliveries can be scheduled as early as 7:00 a.m. if requested. Restrictions on truck traffic during certain times may apply, which will require consideration on setting appointment times.
- The home delivery agent will contact the consumer within three business days of purchase to schedule a delivery date. The consumer will be contacted again the day prior to scheduled delivery. At confirmation, a four hour delivery window will be set up.
- An adult (age 18 or older) must be present at the time of delivery. The consumer will be contacted within an hour prior to arrival. It will be considered a no-show or refusal if the consumer is not present at the time of scheduled delivery. The delivery team will wait 15 minutes prior to departing. Re-delivery charges may apply.
- For orders of 10 or more cabinets we recommend that you do not open the boxes. Please wait for your installer in order to avoid damaging the cabinets. If the installer finds any damages which were not visible at time of delivery, please contact your customer service representative.
- The delivery vehicle size is a standard sized box truck that is about 30' long, 13' tall, and 9' wide. Most of the time these trucks will be weighted at 22,000 pounds DVW (Declared Vehicle Weight), but some trucks will be DVW at 26,000 pounds.
- Space has to be cleared and ready for delivery prior to driver team arrival (driver teams are not allowed to move personal belongings).
- Driver teams will consist of at least two people.
- Opening and inspecting cabinets will take place after delivery team leaves; the consumer is only signing for visual damage to cartons upon delivery.

DISCONTINUED PRODUCT POLICY

Product will no longer be available for order after the discontinuation date. Only warranty orders will be considered. Even with warranty orders we will have the option to replace customer's defective product with the same discontinued product they originally purchased or replace all doors originally ordered with a current product that is similar in appearance.

CABINET RETURN POLICY - AT A GLANCE

For misordered products and cancellations:

- Returnable? NO
- New Purchase Order? YES
- Cancellation? NO
- Amount of Credit? 0%

For damaged, defective, or incorrectly shipped products:

- Returnable? NO
- New Purchase Order? NO
- Cancellation Charge? NO
- Amount of Credit? 100%*
- Re-delivery Charge? NO

Ordered something wrong?

- No changes to original purchase order allowed. Must submit a new purchase order.
- New purchase order number required for misordered product.

Received a damaged, defective or incorrectly shipped product?

- Please contact Customer Service to reorder damaged, defective or incorrectly shipped product.
- No new purchase order is required.

Remind your consumers to inspect all cabinets immediately upon arrival.

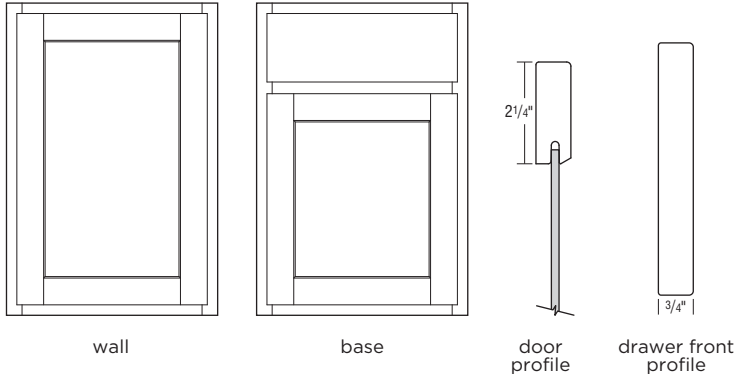
- Cartons showing visible damage should be noted on the delivery paperwork.
- Do not return product on your own.
- Time limit for contacting Customer Service regarding any problems is 90 days from invoice.

*Thomasville Cabinetry must be given the opportunity to replace or correct shipped products. If returned in error, credit will not be issued.

DOOR STYLES

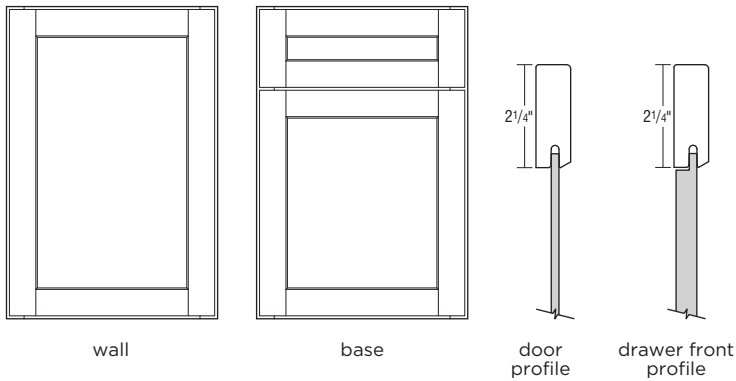
COTTAGE PARTIAL

Partial Overlay • Shaker • 2 1/4" Rail • Veneer Center Panel • Slab Drawer Front
 • Available in Trestle and White



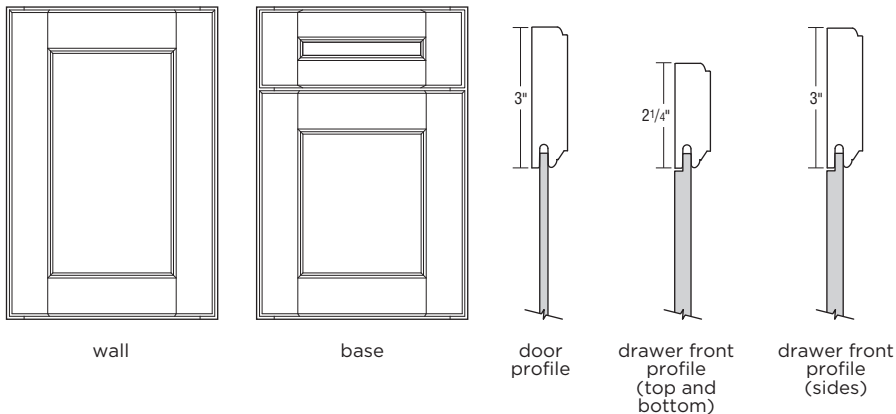
COTTAGE FULL

Full Overlay • Shaker • 2 1/4" Rail • Veneer Center Panel • 5-piece Drawer Front
 • Available in Fossil, Sterling, and White

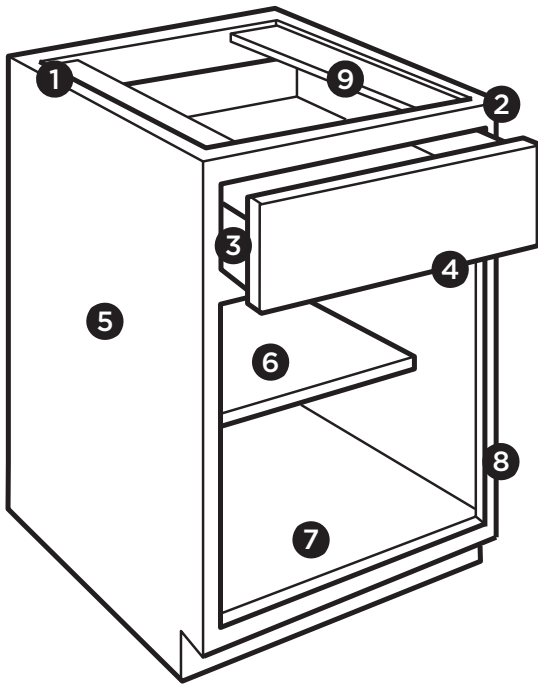


EVERLY

Full Overlay • Transitional • 3" Rail • Veneer Center Panel • 5-piece Drawer Front
 • Available in Sterling and White



PRODUCT SPECIFICATIONS



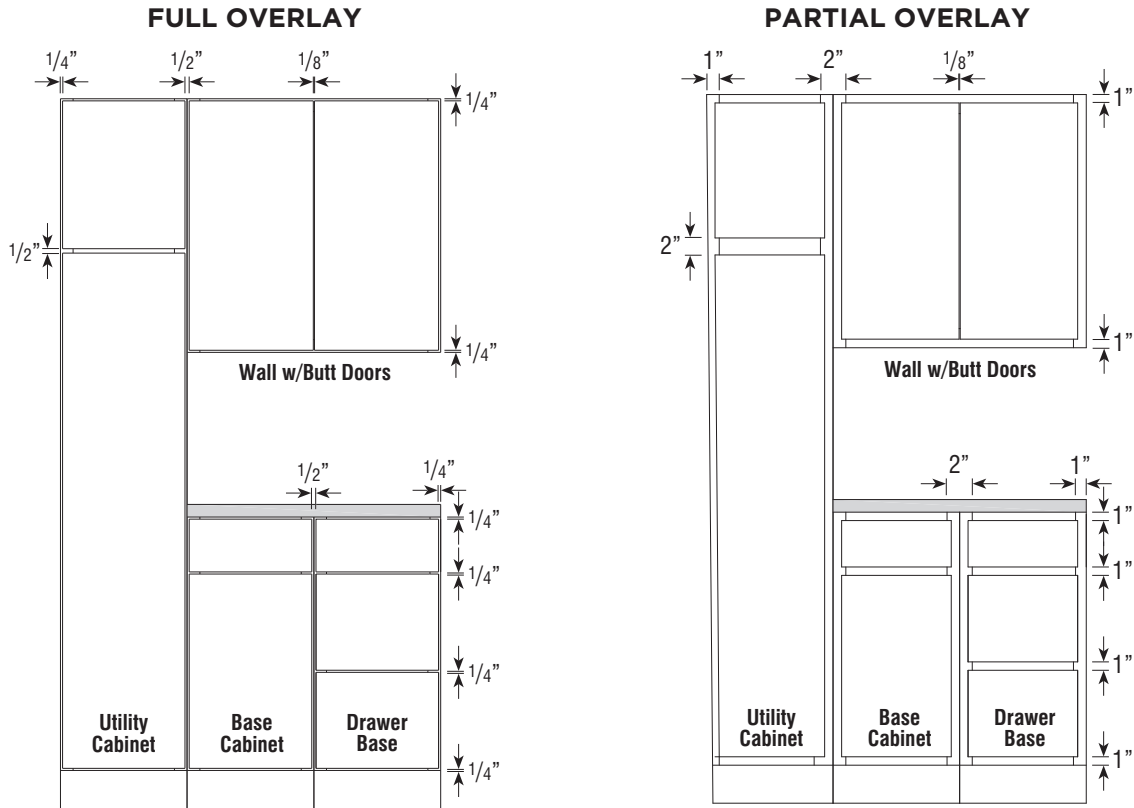
- 1 1/2" Plywood ends, 3/8" Plywood top, back, and bottom
- 2 3/4" Hardwood frame, doors and drawer fronts
- 3 5/8" Solid wood dovetail drawer box
- 4 QuietClose, undermount, full extension drawer guides
- 5 Matching exterior
- 6 3/4" Natural Plywood adjustable shelves
- 7 Natural interior
- 8 QuietClose, 6-way adjustable hinges
- 9 3/8" Plywood I-beam braces

Cabinet Care and Cleaning Instructions:
<https://www.masterbrand.com/care-and-cleaning>

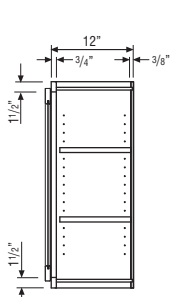
For warranty information, visit: [thomasvillecabinetry.com/warranty](https://www.thomasvillecabinetry.com/warranty)

In keeping with our practice of continuous product improvement and/or to maximize efficiencies, Thomasville Cabinetry may adjust specifications in design and materials as it deems necessary. Where differing materials are utilized, they will be of similar or better quality in keeping with Thomasville Cabinetry's commitment to quality.

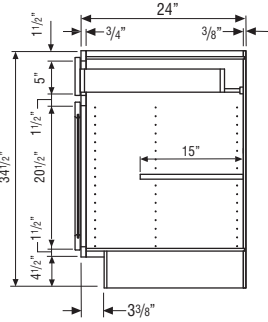
FULL AND PARTIAL OVERLAY SPECIFICATIONS



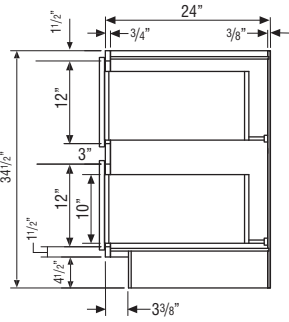
CABINET DIMENSIONS



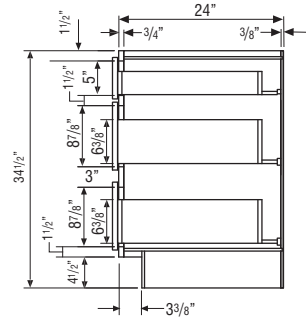
WALL CABINET



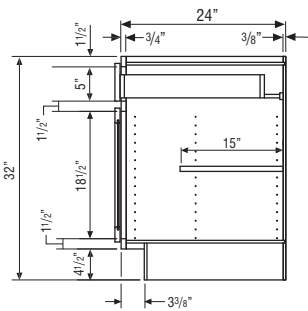
BASE CABINET



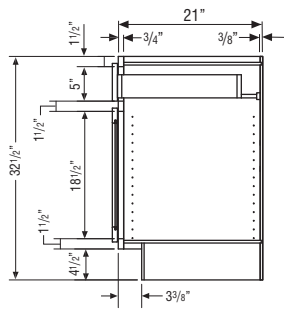
**TWO-DRAWER
BASE CABINET**



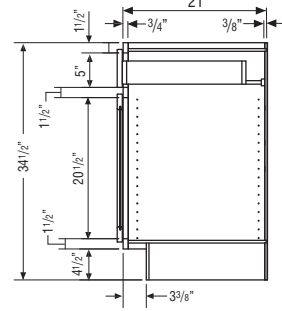
**THREE-DRAWER
BASE CABINET**



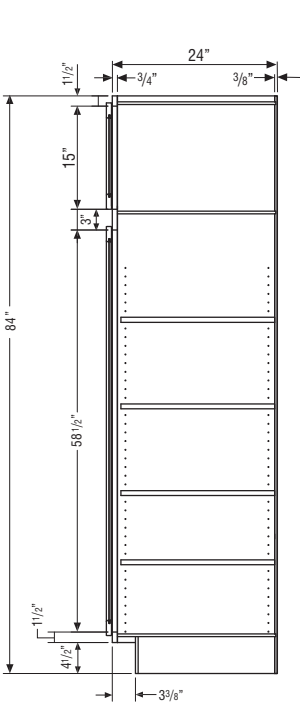
**32 1/2" HIGH
BASE CABINET**



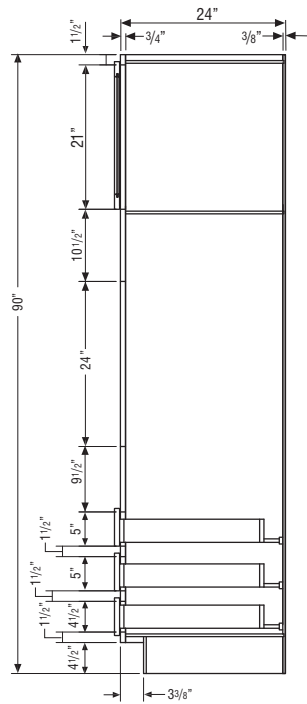
**32 1/2" HIGH
VANITY CABINET**



**34 1/2" HIGH
VANITY CABINET**



UTILITY CABINET

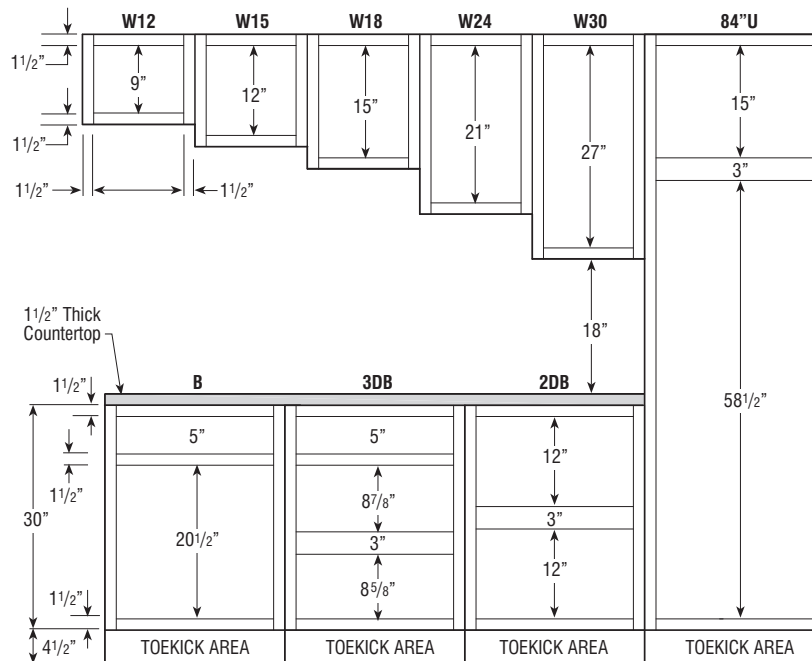


OC3D CABINET

CABINET DIMENSIONS

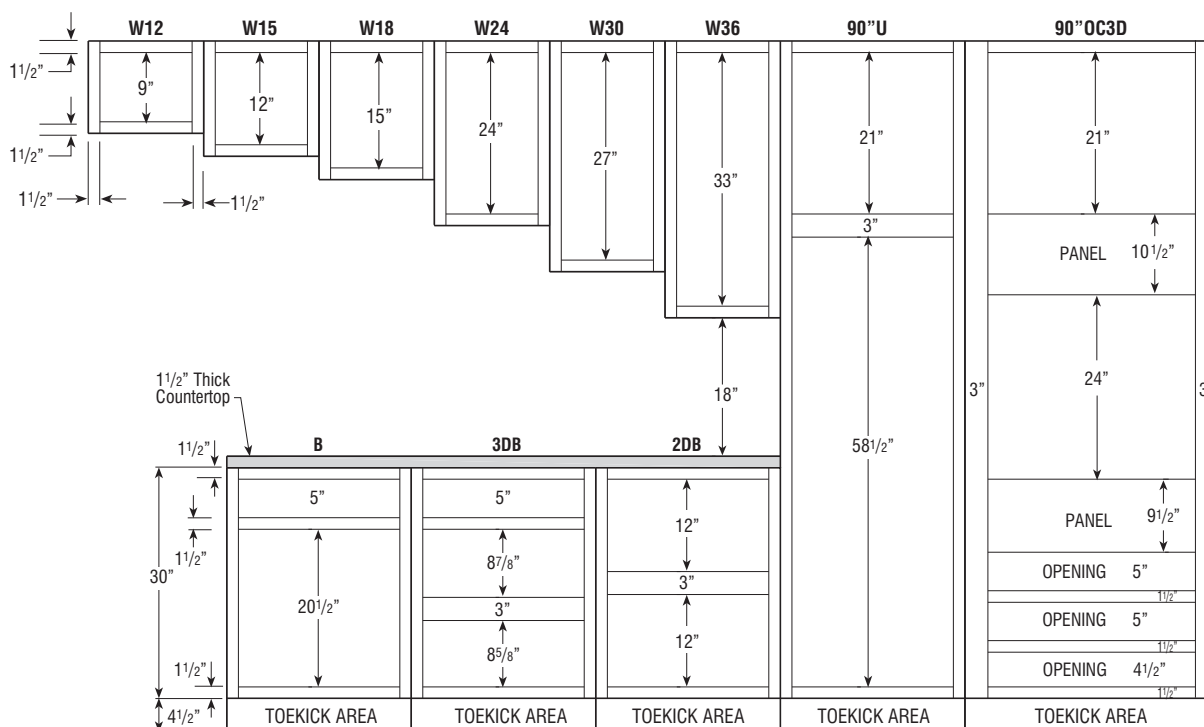
84" HIGH APPLICATION

Number after Wall Cabinet Represents Height of Cabinet



90" HIGH APPLICATION

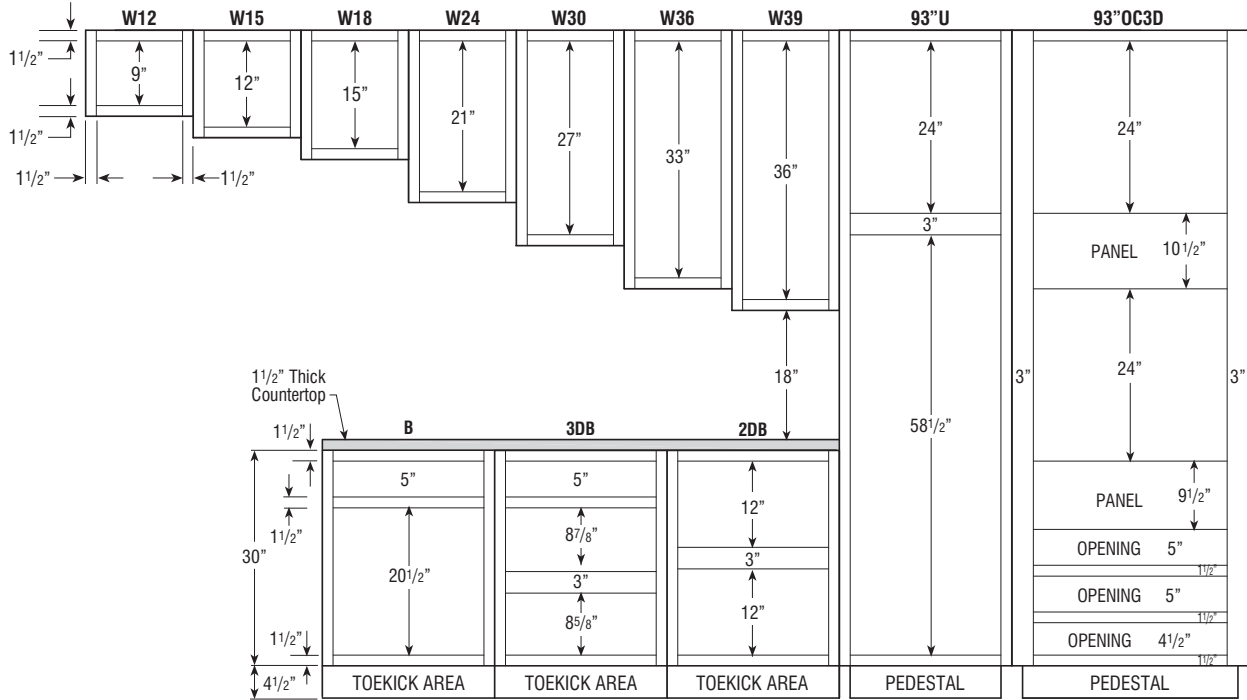
Number after Wall Cabinet Represents Height of Cabinet



CABINET DIMENSIONS

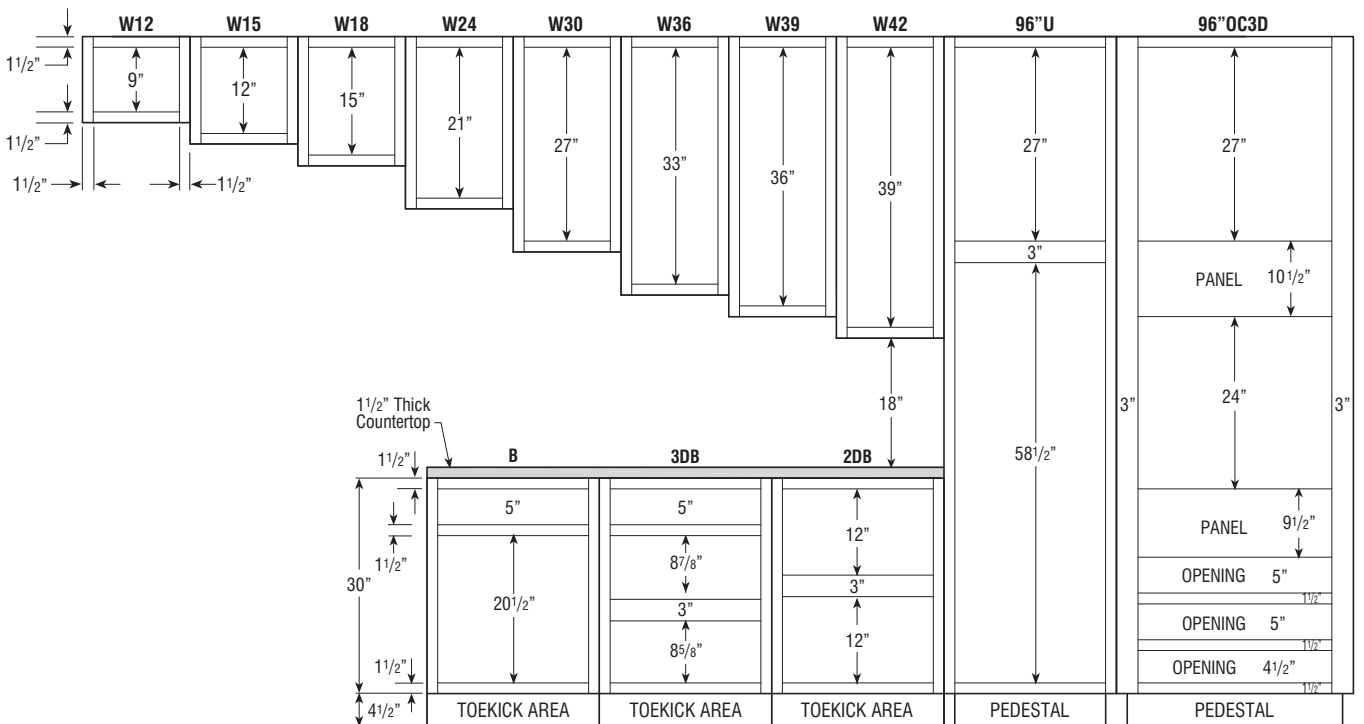
93" HIGH APPLICATION

Number after Wall Cabinet Represents Height of Cabinet



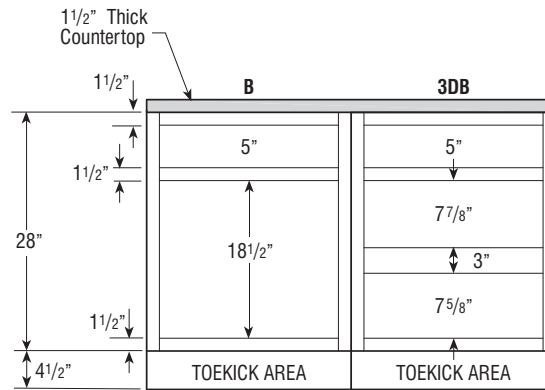
96" HIGH APPLICATION

Number after Wall Cabinet Represents Height of Cabinet

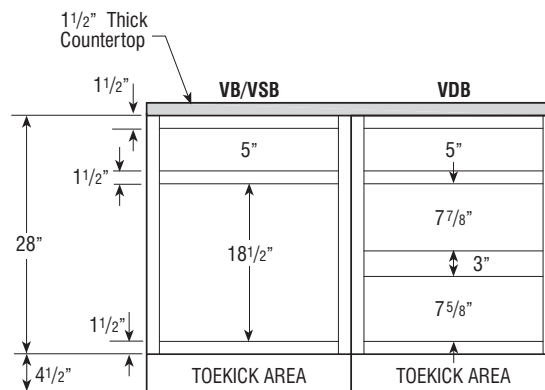


CABINET DIMENSIONS

32 1/2" HIGH BASE CABINETS



32 1/2" HIGH VANITY CABINETS



34 1/2" HIGH VANITY CABINETS

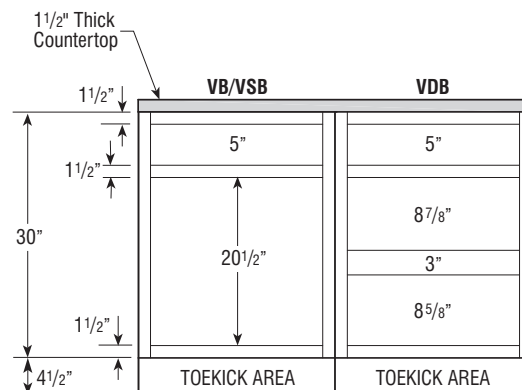


TABLE OF CONTENTS - WALL CABINETS



12" Deep Wall

12" High14
15" High14
18" High15
24" High15
30" High16
36" High18
39" High20
42" High22

12" Deep Wall Cut-for-glass

30" High24
36" High25
42" High26

24" Deep Wall

12" High27
18" High28
24" High28

12" Deep Wall Corner

30" High29
36" High30
39" High31
42" High31

12" Deep Diagonal Wall

30" High32
36" High32
39" High32
42" High32

12" Deep Diagonal Wall Cut-for-glass

30" High33
36" High33
42" High33

WALL DOUBLE DOOR

12" High

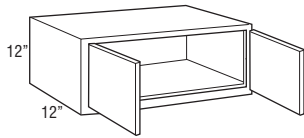
12" Deep

Model

W3012

W3312

W3612



WALL DOUBLE DOOR

15" High

12" Deep

Model

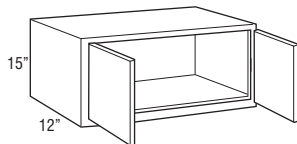
W2415

W3015

W3315

W3615

- W2415 not available in Cottage Partial Trestle.



WALL DOUBLE DOOR

18" High

12" Deep

Model

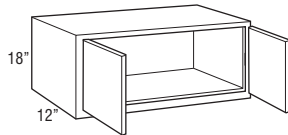
W2418

W3018

W3318

W3618

- W2418 not available in Cottage Partial Trestle.



WALL SINGLE DOOR

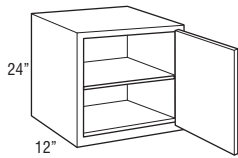
24" High

12" Deep

Model

W2124R

- Cabinet hinged on the right; may be flipped for left hinge application.



WALL DOUBLE DOOR

24" High

12" Deep

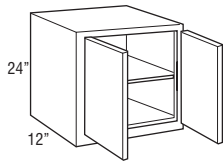
Model

W2424

W3024

W3324

W3624



WALL SINGLE DOOR

30" High

12" Deep

Model

W930R

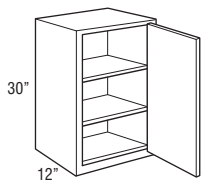
W1230R

W1530R

W1830R

W2130R

- Cabinet hinged on the right; may be flipped for left hinge application.



WALL DOUBLE DOOR

30" High

12" Deep

Model

W2430

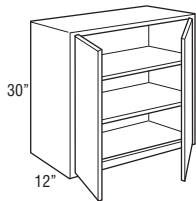
W2730

W3030

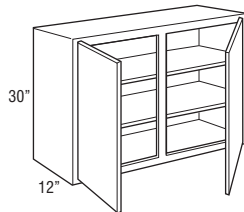
W3330

W3630

W4230



W2430-W3630
Butt doors



W4230
Center stile

WALL SINGLE DOOR

36" High

12" Deep

Model

W936R

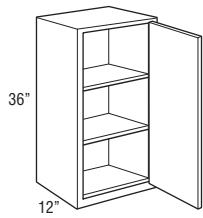
W1236R

W1536R

W1836R

W2136R

- Cabinet hinged on the right; may be flipped for left hinge application.



WALL DOUBLE DOOR

36" High

12" Deep

Model

W2436

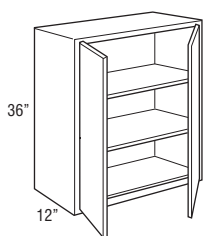
W2736

W3036

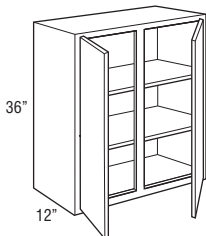
W3336

W3636

W4236



W2436-W3636
Butt doors



W4236
Center stile

WALL SINGLE DOOR

39" High

12" Deep

Model

W939R

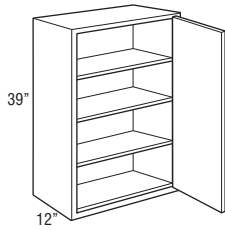
W1239R

W1539R

W1839R

W2139R

- Cabinet hinged on the right; may be flipped for left hinge application.
- Not available in Cottage Partial Trestle.



WALL DOUBLE DOOR

39" High

12" Deep

Model

W2439

W2739

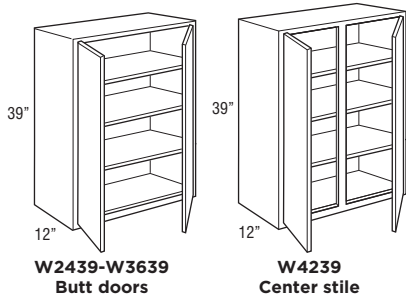
W3039

W3339

W3639

W4239

• Not available in Cottage Partial Trestle.



WALL SINGLE DOOR

42" High

12" Deep

Model

W942R

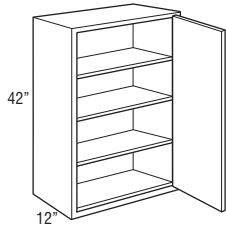
W1242R

W1542R

W1842R

W2142R

- Cabinet hinged on the right; may be flipped for left hinge application.



WALL DOUBLE DOOR

42" High

12" Deep

Model

W2442

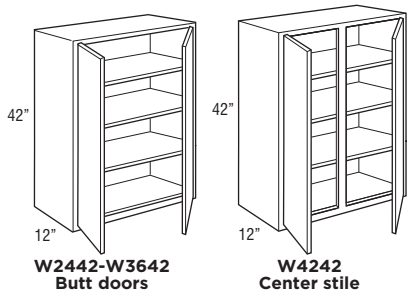
W2742

W3042

W3342

W3642

W4242



WALL CUT-FOR-GLASS CABINETS

RECOMMENDED GLASS SIZE FOR WALL CABINET DOORS			
SKU	Cottage Full Door Size	Door Route Size	Glass Size
WCG1530R	14 1/2" x 29 1/2"	11 1/4" x 26 1/4"	11 1/16" x 26 1/16"
WCG1830R	17 1/2" x 29 1/2"	14 1/4" x 26 1/4"	14 1/16" x 26 1/16"
WCG3030	14 11/16" x 29 1/2"	11 7/16" x 26 1/4"	11 1/4" x 26 1/16"
WCG3630	17 11/16" x 29 1/2"	14 7/16" x 26 1/4"	14 1/4" x 26 1/16"
WCG1536R	14 1/2" x 35 1/2"	11 1/4" x 32 1/4"	11 1/16" x 32 1/16"
WCG1836R	17 1/2" x 35 1/2"	14 1/4" x 32 1/4"	14 1/16" x 32 1/16"
WCG3036	14 11/16" x 35 1/2"	11 7/16" x 32 1/4"	11 1/4" x 32 1/16"
WCG3636	17 11/16" x 35 1/2"	14 7/16" x 32 1/4"	14 1/4" x 32 1/16"
WCG1542R	14 1/2" x 41 1/2"	11 1/4" x 38 1/4"	11 1/16" x 38 1/16"
WCG1842R	17 1/2" x 41 1/2"	14 1/4" x 38 1/4"	14 1/16" x 38 1/16"
WCG3042	14 11/16" x 41 1/2"	11 7/16" x 38 1/4"	11 1/4" x 38 1/16"
WCG3642	17 11/16" x 41 1/2"	14 7/16" x 38 1/4"	14 1/4" x 38 1/16"

*Recommended glass size dimensions are 3/16" smaller than glass route.

WALL CUT-FOR-GLASS

30" High

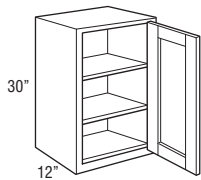
12" Deep

Model

WCG1530R

WCG1830R

- Cabinet hinged on the right; may be flipped for left hinge application.
- Glass not included.
- Cabinets will have matching interior.
- Available in Cottage Full Fossil, Sterling, and White.



WALL CUT-FOR-GLASS

30" High

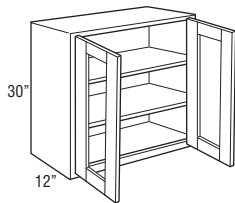
12" Deep

Model

WCG3030

WCG3630

- Glass not included.
- Cabinets will have matching interior.
- Available in Cottage Full Fossil, Sterling, and White.

**WALL CUT-FOR-GLASS**

36" High

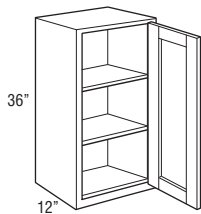
12" Deep

Model

WCG1536R

WCG1836R

- Cabinet hinged on the right; may be flipped for left hinge application.
- Glass not included.
- Cabinets will have matching interior.
- Available in Cottage Full Fossil, Sterling, and White.



WALL CUT-FOR-GLASS

36" High

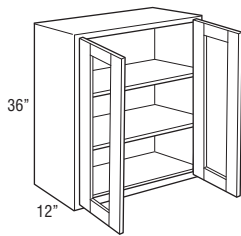
12" Deep

Model

WCG3036

WCG3636

- Glass not included.
- Cabinets will have matching interior.
- Available in Cottage Full Fossil, Sterling, and White.

**WALL CUT-FOR-GLASS**

42" High

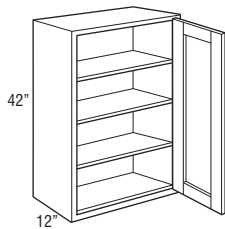
12" Deep

Model

WCG1542R

WCG1842R

- Cabinet hinged on the right; may be flipped for left hinge application.
- Glass not included.
- Cabinets will have matching interior.
- Available in Cottage Full Fossil, Sterling, and White.



WALL CUT-FOR-GLASS

42" High

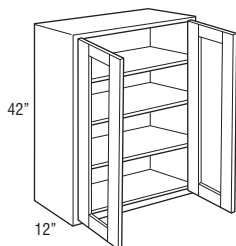
12" Deep

Model

WCG3042

WCG3642

- Glass not included.
- Cabinets will have matching interior.
- Available in Cottage Full Fossil, Sterling, and White.

**WALL DOUBLE DOOR**

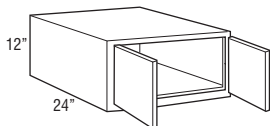
12" High

24" Deep

Model

W361224

- 24" deep cabinets must be supported on three surfaces when mounted.
- Load limit is 15 lbs. per square foot of load bearing surface.



WALL DOUBLE DOOR

18" High

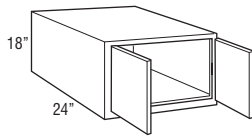
24" Deep

Model

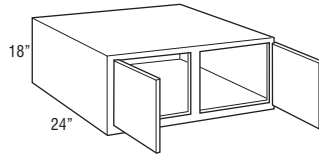
W361824

W391824

- 24" deep cabinets must be supported on three surfaces when mounted.
- Load limit is 15 lbs. per square foot of load bearing surface.



W361824
Butt doors



W391824
Center stile

WALL DOUBLE DOOR

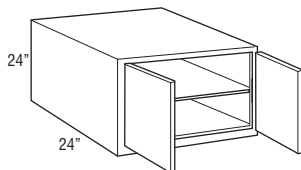
24" High

24" Deep

Model

W362424

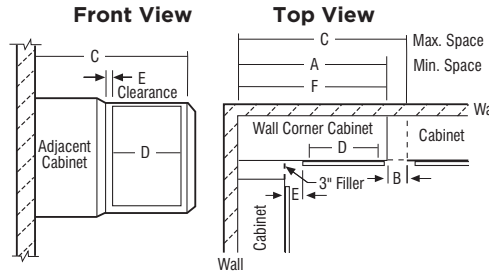
- 24" deep cabinets must be supported on three surfaces when mounted.
- Load limit is 15 lbs. per square foot of load bearing surface.



WALL CORNER CABINETS

SKU	A Min. Space	B Max. Pull	C Max. Space	D Cabinet Opening	E Full Overlay		E Partial Overlay		F Actual Cabinet
					At Min.	At Max.	At Min.	At Max.	
WC30...	30"	5"	35"	13 1/2"	1 3/4"	6 3/4"	2 1/2"	7 1/2"	30"
WC36...	36"	5"	41"	19 1/2"	1 3/4"	6 3/4"	2 1/2"	7 1/2"	36"
WC42...	42"	4 1/2"	46 1/2"	24"	3 1/4"	7 3/4"	4"	8 1/2"	42"

- Wall corner cabinets may be installed flush to the wall (left) or pulled 3" away from wall (right) to accommodate add dimensions in a kitchen design. In either case, the adjoining run of 12" wall cabinets plus a 3" filler will butt against the solid-wood panel.
- When a cabinet is "pulled" it will use proportionally more space, for example, a 30" wide WC, pulled 2" will use 32" of space.
- Blind side of wall corner cabinets cannot be installed next to a range hood unit due to door interference.



NOTE:
All outside stiles are 1 1/2" wide

WALL CORNER SINGLE DOOR

30" High

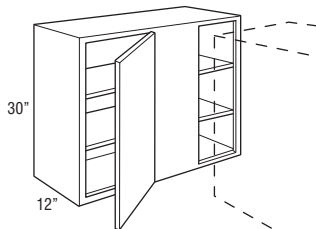
12" Deep

Model

WC3030S

WC3630S

- Right blind shown; cabinet may be flipped for left blind application.
- Filler required for installation. Must be ordered separately.



WALL CORNER DOUBLE DOOR

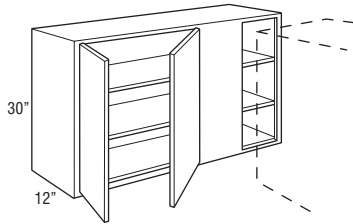
30" High

12" Deep

Model

WC4230S

- Right blind shown; cabinet may be flipped for left blind application.
- Filler required for installation. Must be ordered separately.

**WALL CORNER SINGLE DOOR**

36" High

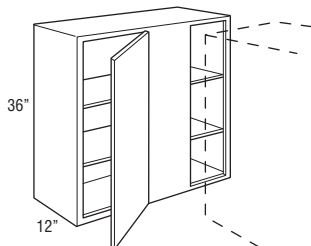
12" Deep

Model

WC3036S

WC3636S

- Right blind shown; cabinet may be flipped for left blind application.
- Filler required for installation. Must be ordered separately.



WALL CORNER SINGLE DOOR

39" High

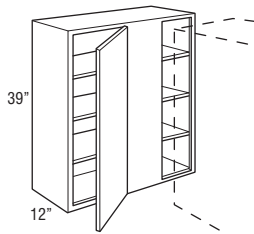
12" Deep

Model

WC3039S

WC3639S

- Right blind shown; cabinet may be flipped for left blind application.
- Filler required for installation. Must be ordered separately.
- Not available in Cottage Partial Trestle.

**WALL CORNER SINGLE DOOR**

42" High

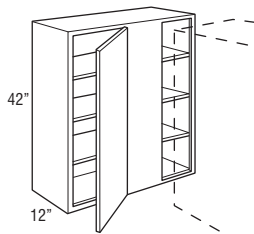
12" Deep

Model

WC3042S

WC3642S

- Right blind shown; cabinet may be flipped for left blind application.
- Filler required for installation. Must be ordered separately.



DIAGONAL WALL

30" High

36" High

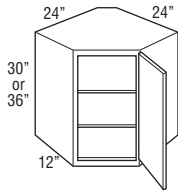
12" Deep

Model

DW302424R

DW362424R

- Cabinet hinged on the right; may be flipped for left hinge application.
- Cabinets require 24" x 24" of corner wall space.



DIAGONAL WALL

39" High

42" High

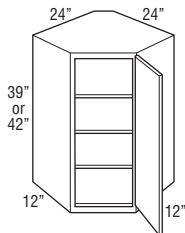
12" Deep

Model

DW392424R new

DW422424R

- Cabinet hinged on the right; may be flipped for left hinge application.
- Cabinets require 24" x 24" of corner wall space.
- DW392424R not available in Cottage Partial Trestle.



DIAGONAL WALL CUT-FOR-GLASS CABINETS

RECOMMENDED GLASS SIZE FOR WALL CABINET DOORS			
SKU	Cottage Full Door Size	Door Route Size	Glass Size
DWCG302424R	14 1/2" x 29 1/2"	11 1/4" x 26 1/4"	11 1/16" x 26 1/16"
DWCG362424R	14 1/2" x 35 1/2"	11 1/4" x 32 1/4"	11 1/16" x 32 1/16"
DWCG422424R	14 1/2" x 41 1/2"	11 1/4" x 38 1/4"	11 1/16" x 38 1/16"

*Recommended glass size dimensions are 3/16" smaller than glass route.

DIAGONAL WALL CUT-FOR-GLASS

30" High

36" High

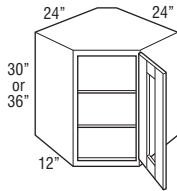
12" Deep

Model

DWCG302424R

DWCG362424R

- Cabinet hinged on the right; may be flipped for left hinge application.
- Cabinets require 24" x 24" of corner wall space.
- Glass not included.
- Cabinets will have matching interior.
- Available in Cottage Full Fossil, Sterling, and White.



DIAGONAL WALL CUT-FOR-GLASS

42" High

12" Deep

Model

DWCG422424R

- Cabinet hinged on the right; may be flipped for left hinge application.
- Cabinets require 24" x 24" of corner wall space.
- Glass not included.
- Cabinets will have matching interior.
- Available in Cottage Full Fossil, Sterling, and White.

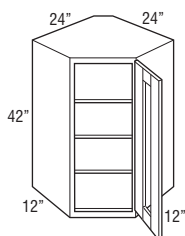


TABLE OF CONTENTS – BASE CABINETS



34 1/2" High, 24" Deep

Base with Drawer	35
Full Height Base	36
Drawer Base	37
Base Built-in Microwave Cabinet with Drawer	39
Base Wastebasket	39
Sink Base	40
Base Corner	42

BASE SINGLE DOOR

34½" High

24" Deep

Model

B9R

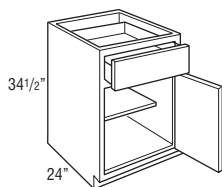
B12R

B15R

B18R

B21R

- Cabinet hinged on the right; door may be flipped for left hinge application.
- Roll tray kits available for 15"-21" widths.



BASE DOUBLE DOOR

34 1/2" High

24" Deep

Model

B24

B27

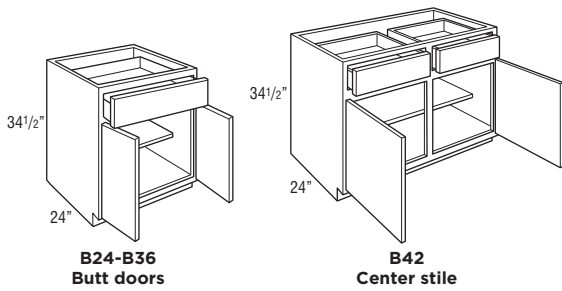
B30

B33

B36

B42

- Roll tray kits available for 24"-42" widths.



FULL HEIGHT BASE SINGLE DOOR

34 1/2" High

24" Deep

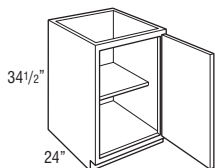
Model

B9FHR *new*

B15FHR

B18FHR

- Cabinet hinged on the right; door may be flipped for left hinge application.
- Roll tray kits available for 15"-18" widths.
- B9FHR not available in Cottage Partial Trestle.



FULL HEIGHT BASE DOUBLE DOOR

34½" High

24" Deep

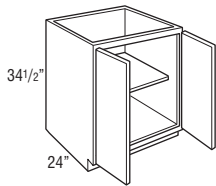
Model

B24FH

B30FH

B36FH

- Roll tray kits available for 24"-36" widths.



TWO DRAWER BASE

34½" High

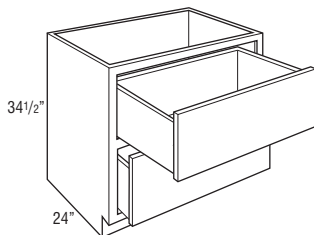
24" Deep

Model

2DB30

2DB36

- On door styles with slab drawer fronts, all drawer fronts will be slab.



THREE DRAWER BASE

34½" High

24" Deep

Model

3DB12

3DB15

3DB18

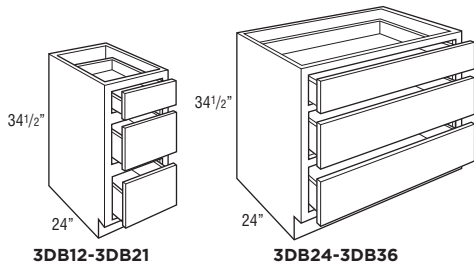
3DB21

3DB24

3DB30

3DB36

- On door styles with slab drawer fronts, all drawer fronts will be slab.



BASE BUILT-IN MICROWAVE CABINET WITH DRAWER

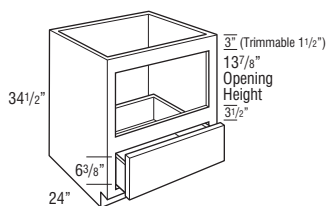
34 1/2" High

24" Deep

Model

BBMWD30

- Natural interior finish.
- For built-in appliance support, OCINSTALLKIT is included.
- For finished interior, consider field application of BP4834.514 (to cover interior sides, back, and field supplied floor).
- The usable cabinet face height between top of drawer front and top of cabinet is 19 1/8" for partial overlay and 19 3/4" for full overlay. Be sure to verify overall appliance height, gap requirements, and cut-out dimensions with cabinet specifications.



Model	Opening Width	Maximum Width	Opening Height	Maximum Height
BBMWD30	27"	28 1/2"	13 7/8"	16 7/8"

BASE WASTEBASKET

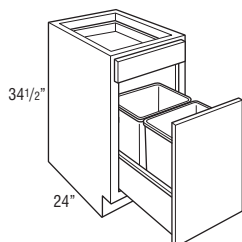
34 1/2" High

24" Deep

Model

BWB18

- Pull-out features undermount full extension, QuietClose guides.
- Includes two 35 quart gray wastebaskets.



SINK BASE

34 1/2" High

24" Deep

Model

SB24

SB27

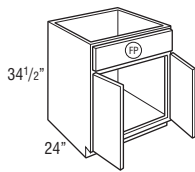
SB30

SB33

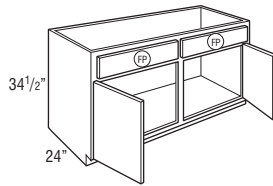
SB36

SB42

- Mini Touch-up Kit (MTUK) included. MTUK includes small touch-up marker and small fill stick.
- Tilt-out tray kits available.



SB24-SB36
Butt doors



SB42
Center stile

COUNTRY SINK BASE

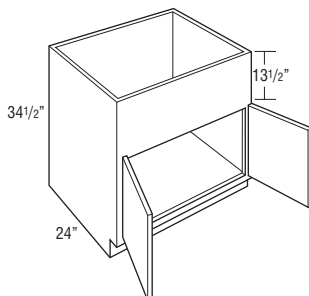
34 1/2" High

24" Deep

Model

CNTYSB36

- 13 1/2" panel can be trimmed up to 12".
- Mini Touch-up Kit (MTUK) included. MTUK includes small touch-up marker and small fill stick.
- Refer to manufacturer's recommendations for additional support required for apron front sinks.



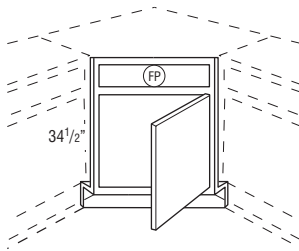
ANGLED CORNER SINK FRONT WITHOUT SINK FLOOR

34 1/2" High

Model

ACSF36R

- Frame edges beveled at 45°.
- Toekick and toekick retainer shipped unattached from the face frame.
- Sink base floor not included.



Max. Sink Widths if cut-out is 4" back from face of front frame

Wall Width	Frame	Maximum Sink Width	Maximum Sink Depth
36" x 36"	17"	25 3/4"	27 11/32"

ANGLED CORNER SINK FRONT BOTTOM

Model

ACSFB36

- Designed for use with Angled Corner Sink Front.
- 3/4" thick.
- 1-side laminated plywood.



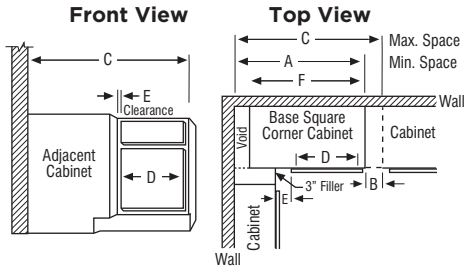
BASE CORNER CABINETS

SKU	A Min. Space	B Max. Pull	C Max. Space	D Cabinet Opening	E Full Overlay		E Partial Overlay		F Actual Cabinet
					At Min.	At Max.	At Min.	At Max.	
BC36S	36"	6"	42"	7 1/2"	1 3/4"	7 3/4"	2 1/2"	8 1/2"	27"
BC42S	42"	6"	48"	13 1/2"	1 3/4"	7 3/4"	2 1/2"	8 1/2"	39"
BC48S	48"	3"	51"	16 1/2"	4 3/4"	7 3/4"	5 1/2"	8 1/2"	45"

- BCs use the wall space the nomenclature implies and may be pulled up to 3" to accommodate odd dimensions in a kitchen.
- Remember to use 3" filler on adjoining cabinets.
- The adjoining run of cabinets will cover the void.

NOTE:

Full overlay styles must be pulled an additional 1 1/2" to ensure proper drawer/pull clearance. 1 1/2" pull is not included in minimum and maximum list.



BASE CORNER SINGLE DOOR

34 1/2" High

24" Deep

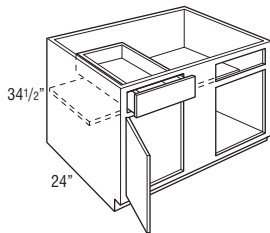
Model

BC36S

BC42S

BC48S

- Right blind shown; door and drawer can be reversed for left blind application.
- Filler required for installation. Must be ordered separately.



BASE EASY REACH

34 1/2" High

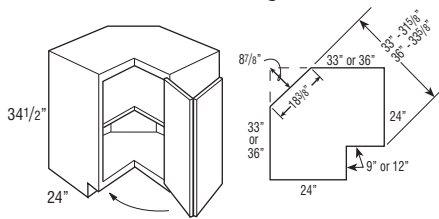
24" Deep

Model

BER33R

BER36R

- BER33R wall width is 33" x 33". BER36R wall width is 36" x 36".
- Decorative hardware screws must be countersunk to prevent scratching of adjacent cabinets and face frame of BER.
- Not recommended for use next to an appliance deeper than standard cabinet depth.
- QuietClose not available.
- BER33R not available in Cottage Partial Trestle.



Due to the fixed shelves mounting shelves cannot be retrofitted.

SUPER LAZY SUSAN

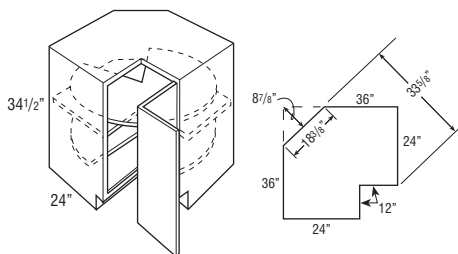
34 1/2" High

24" Deep

Model

SLS36R

- Wall width is 36" x 36".
- Features two plywood revolving shelves. Lower shelf is mounted to floor. Upper shelf is mounted to fixed shelf.
- Decorative hardware screws must be countersunk to prevent scratching adjacent cabinets and face frame of SLS.
- Not recommended for use next to an appliance deeper than standard cabinet depth.
- QuietClose not available.



Due to the fixed shelves mounting shelves cannot be retrofitted.

BASE LAZY SUSAN34¹/₂" High

24" Deep

Model

BLS36R

- Wall width is 36" x 36".
- Cabinet is drum-shaped; adjoining cabinets create sides.
- Features two white plastic shelves.
- Decorative hardware screws must be countersunk to prevent scratching of adjacent cabinets and face frame of BLS.
- Not recommended for use next to an appliance deeper than standard cabinet depth.
- QuietClose not available.

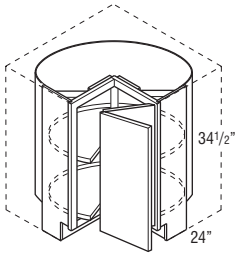
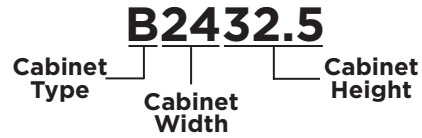


TABLE OF CONTENTS - UNIVERSAL ACCESS CABINETS



32 1/2" High, 24" Deep

Universal Access Base with Drawer	46
Universal Access Three Drawer Base	47
Universal Access Base Built-in Microwave Cabinet with Drawer	47
Universal Access Base Sink Removable	48
Universal Access Vanity Base Sink Removable	48
Universal Access Base Corner	49

NOTE: Universal Access Cabinets must meet certain design requirements in order to be labeled ADA compliant.

UNIVERSAL ACCESS, BASE SINGLE DOOR

32½" High

24" Deep

Model

B932.5R

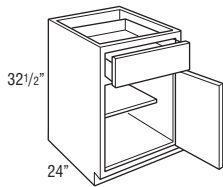
B1232.5R

B1532.5R

B1832.5R

B2132.5R

- Cabinet hinged on the right; door may be flipped for left hinge application.
- Roll tray kits available for 15"-21" widths.
- Available in Cottage Full White.

**UNIVERSAL ACCESS, BASE DOUBLE DOOR**

32½" High

24" Deep

Model

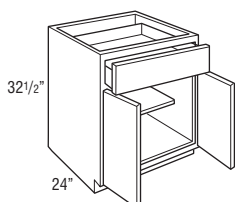
B2432.5

B3032.5

B3332.5

B3632.5

- Roll tray kits available for 24"-36" widths.
- Available in Cottage Full White.



UNIVERSAL ACCESS, THREE DRAWER BASE

32 1/2" High

24" Deep

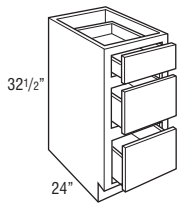
Model

3DB1232.5

3DB1532.5

3DB1832.5

- On door styles with slab drawer fronts, all drawer fronts will be slab.
- Available in Cottage Full White.



UNIVERSAL ACCESS, BASE BUILT-IN MICROWAVE CABINET WITH DRAWER

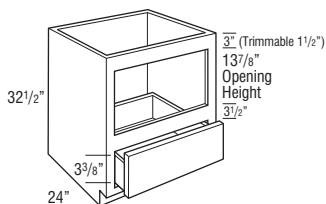
32 1/2" High

24" Deep

Model

BBMWD3032.5 new

- Metal appliance support brackets included.
- Cabinets will have matching interior.
- Available in Cottage Full White.



Model	Opening Width	Maximum Width	Opening Height	Maximum Height
BBMWD3032.5	27"	28 1/2"	13 7/8"	16 7/8"

UNIVERSAL ACCESS, BASE SINK REMOVABLE

32½" High

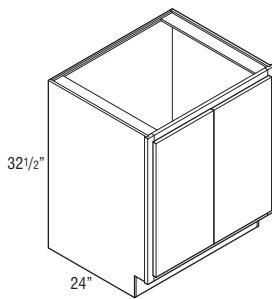
24" Deep

Model

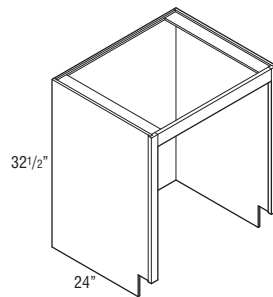
BSR3032.5

BSR3632.5

- Cabinet must be supported on both sides. Not intended for end of run.
- Front, cabinet bottom, and toe-kick are removable.
- Mini Touch-up Kit (MTUK) included. MTUK includes small touch-up marker and small fill stick.
- Available in Cottage Full White.



BSR3032.5-BSR3632.5



Shown with front, cabinet bottom, and toe-kick removed.

UNIVERSAL ACCESS, VANITY BASE SINK REMOVABLE

32½" High

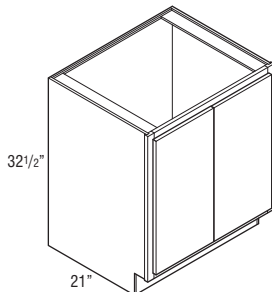
21" Deep

Model

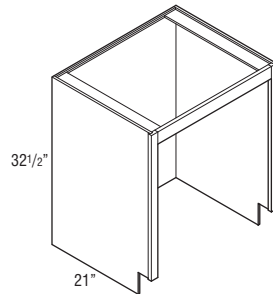
VBSR3032.521 new

VBSR3632.521 new

- Cabinet must be supported on both sides. Not intended for end of run.
- Front, cabinet bottom, and toe-kick are removable.
- Mini Touch-up Kit (MTUK) included. MTUK includes small touch-up marker and small fill stick.
- Available in Cottage Full White.



VBSR3032.521-VBSR3632.521



Shown with front, cabinet bottom, and toe-kick removed.

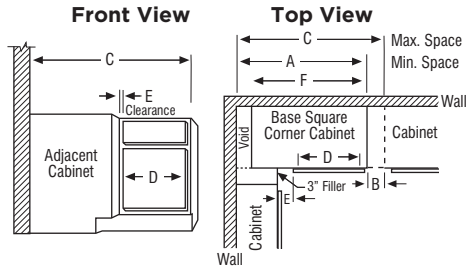
UNIVERSAL ACCESS, BASE CORNER CABINETS

SKU	A Min. Space	B Max. Pull	C Max. Space	D Cabinet Opening	E Full Overlay At Min. At Max.		E Partial Overlay At Min. At Max.		F Actual Cabinet
BC3632.5S	32"	6"	42"	7 1/2"	1 3/4"	7 3/4"	2 1/2"	8 1/2"	27"

- BCs use the wall space the nomenclature implies and may be pulled up to 3" to accommodate odd dimensions in a kitchen.
- Remember to use 3" filler on adjoining cabinets.
- The adjoining run of cabinets will cover the void.

NOTE:

Full overlay styles must be pulled an additional 1 1/2" to ensure proper drawer/pull clearance. 1 1/2" pull is not included in minimum and maximum list.



UNIVERSAL ACCESS, BASE CORNER SINGLE DOOR

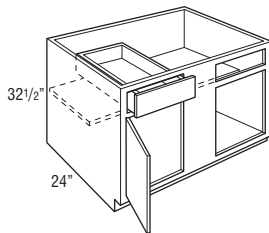
32 1/2" High

24" Deep

Model

BC3632.5S

- Right blind shown; door and drawer can be reversed for left blind application.
- Filler required for installation. Must be ordered separately.
- Available in Cottage Full White.



UNIVERSAL ACCESS, SUPER LAZY SUSAN

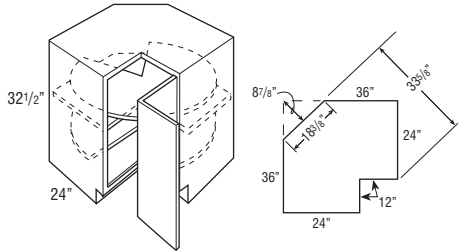
32¹/₂" High

24" Deep

Model

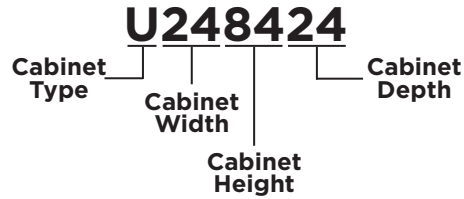
SLS3632.5R

- Wall width is 36" x 36".
- Features two plywood revolving shelves. Lower shelf is mounted to floor. Upper shelf is mounted to fixed shelf.
- Decorative hardware screws must be countersunk to prevent scratching adjacent cabinets and face frame of SLS.
- Not recommended for use next to an appliance deeper than standard cabinet depth.
- QuietClose not available.
- Available in Costello Full White.



Due to the fixed shelves mounting shelves cannot be retrofitted.

TABLE OF CONTENTS - TALL CABINETS



24" Deep Utility Single Door

84" High	52
90" High	52
93" High	53
96" High	53

24" Deep Utility Double Door

84" High	54
90" High	54
93" High	55
96" High	55

24" Deep Single Oven Three Drawers

90" High	56
93" High	56
96" High	57

UTILITY SINGLE DOOR

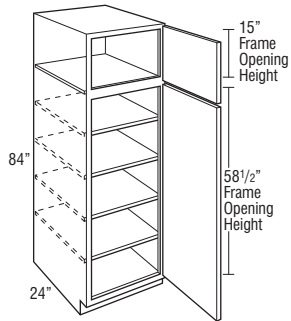
84" High

24" Deep

Model

U188424R

- Roll tray kits available.
- Cabinet hinged on the right; door may be flipped for left hinge application.



UTILITY SINGLE DOOR

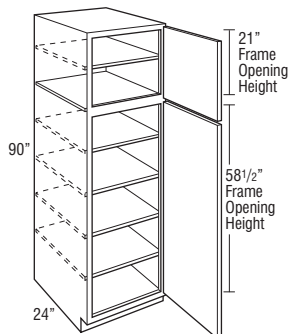
90" High

24" Deep

Model

U189024R

- Roll tray kits available.
- Cabinet hinged on the right; door may be flipped for left hinge application.



UTILITY SINGLE DOOR

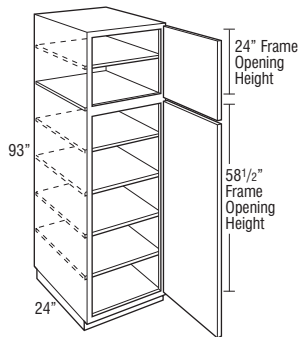
93" High

24" Deep

Model

U189324R new

- Separate pedestal base included on 93" tall.
- Roll tray kits available.
- Cabinet hinged on the right; door may be flipped for left hinge application.
- Not available in Cottage Partial Trestle.



UTILITY SINGLE DOOR

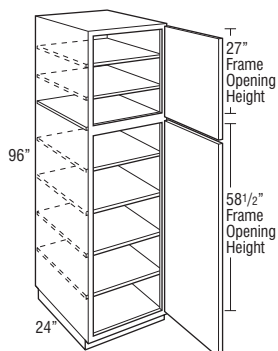
96" High

24" Deep

Model

U189624R

- Separate pedestal base included on 96" tall.
- Roll tray kits available.
- Cabinet hinged on the right; door may be flipped for left hinge application.



UTILITY DOUBLE DOOR

84" High

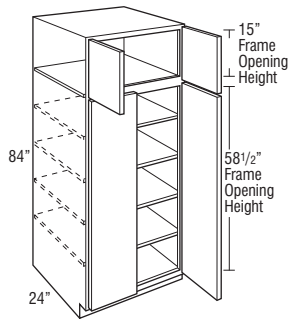
24" Deep

Model

U248424

U308424 new

- Roll tray kits available.
- U308424 not available in Cottage Partial Trestle and White.



UTILITY DOUBLE DOOR

90" High

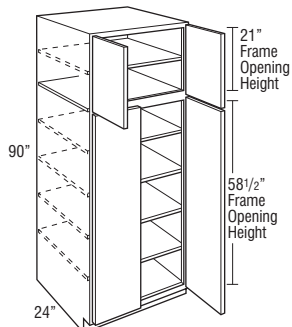
24" Deep

Model

U249024

U309024 new

- Roll tray kits available.
- U309024 not available in Cottage Partial Trestle and White.



UTILITY DOUBLE DOOR

93" High

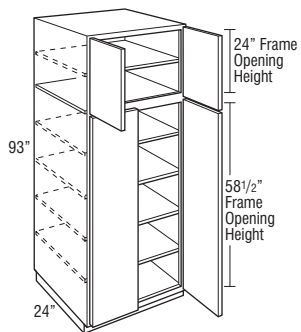
24" Deep

Model

U249324 new

U309324 new

- Separate pedestal base included on 93" tall.
- Roll tray kits available.
- U249324 not available in Cottage Partial Trestle.
- U309324 not available in Cottage Partial Trestle and White.



UTILITY DOUBLE DOOR

96" High

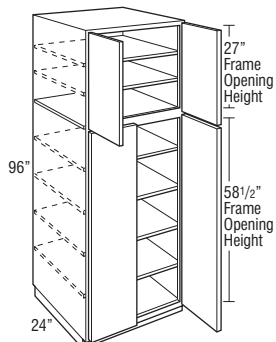
24" Deep

Model

U249624

U309624 new

- Separate pedestal base included on 96" tall.
- Roll tray kits available.
- U309624 not available in Cottage Partial Trestle and White.



SINGLE OVEN THREE DRAWERS

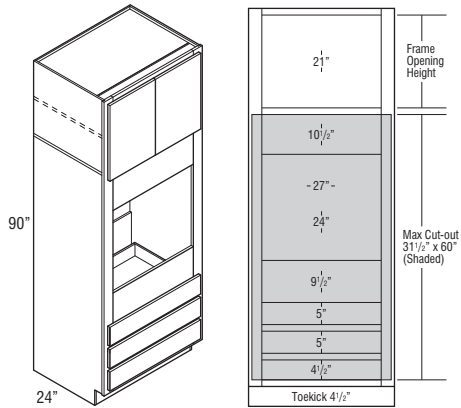
90" High

24" Deep

Model

OC3D339024

- Oven cabinets feature an open back in cut-out area designed to improve field appliance installation.
- Metal appliance support brackets included for 24" deep cabinets.



SINGLE OVEN THREE DRAWERS

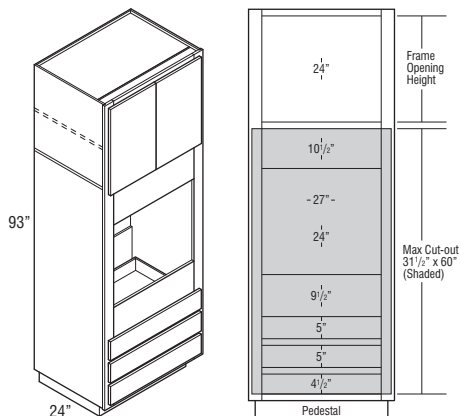
93" High

24" Deep

Model

OC3D339324 **new**

- Oven cabinets feature an open back in cut-out area designed to improve field appliance installation.
- Metal appliance support brackets included for 24" deep cabinets.
- Separate pedestal base included on 93" tall.
- Not available in Cottage Partial Trestle.



SINGLE OVEN THREE DRAWERS

96" High

24" Deep

Model

OC3D339624

- Oven cabinets feature an open back in cut-out area designed to improve field appliance installation.
- Metal appliance support brackets included for 24" deep cabinets.
- Separate pedestal base included on 96" tall.

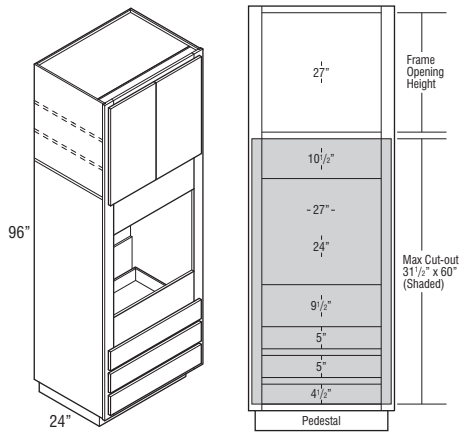
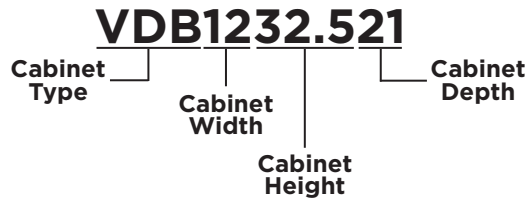


TABLE OF CONTENTS - VANITY CABINETS



32 1/2" High, 21" Deep

Vanity Drawer Base59
Vanity Sink Base59

34 1/2" High, 18" Deep

Vanity Sink Base60
------------------------	-----

34 1/2" High, 21" Deep

Vanity Base with Drawer60
Vanity Drawer Base61
Vanity Sink Base61
Vanity Sink Drawer Base62

VANITY DRAWER BASE

32½" High

21" Deep

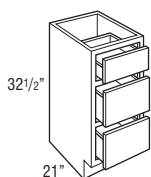
Model

VDB1232.521

VDB1532.521

VDB1832.521

- On door styles with slab drawer fronts, all drawer fronts will be slab.



VANITY SINK BASE

32½" High

21" Deep

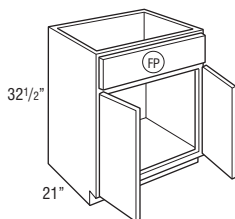
Model

VSB2432.521

VSB3032.521

VSB3632.521

- Tilt-out tray kits available.



VANITY SINK BASE

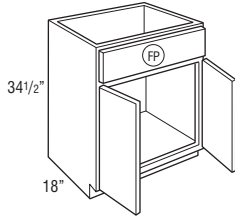
34 1/2" High

18" Deep

Model

VSB243418 **new**

- Tilt-out tray kits available.
- Available in Cottage Full White.



VANITY BASE SINGLE DOOR

34 1/2" High

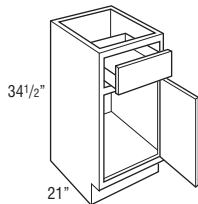
21" Deep

Model

VB153421R

VB183421R

- Cabinet hinged on the right; door may be flipped for left hinge application.



VANITY DRAWER BASE

34½" High

21" Deep

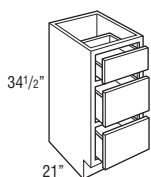
Model

VDB123421

VDB153421

VDB183421

- On door styles with slab drawer fronts, all drawer fronts will be slab.



VANITY SINK BASE

34½" High

21" Deep

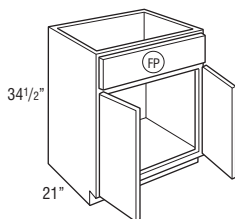
Model

VSB243421

VSB303421

VSB363421

- Tilt-out tray kits available.



VANITY SINK DRAWER BASE

34 1/2" High

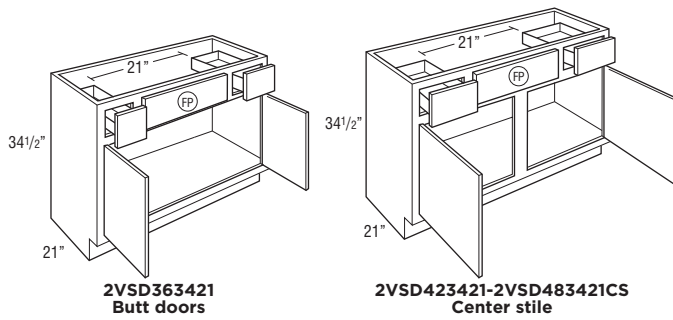
21" Deep

Model

2VSD363421

2VSD423421

2VSD483421CS



VANITY SINK DRAWER BASE

34 1/2" High

21" Deep

Model

3VSD303421 new

3VSD363421 new

• Not available in Cottage Partial Trestle and White.

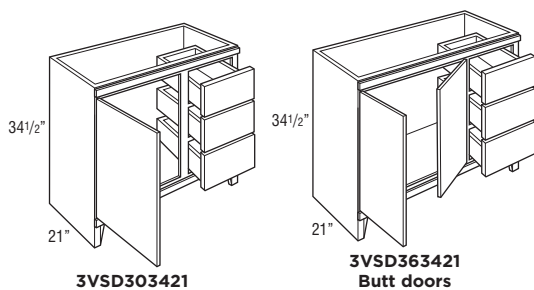


TABLE OF CONTENTS - FILLERS, SKINS, PANELS, & MOULDING

Fillers	64
Skins	66
Panels	68
Crown Moulding	71
Starter Moulding	73
Accent Moulding	73
Corner Moulding	75
Toeboard	76
Straight Valance / Baseboard	77

3" FILLER

Model

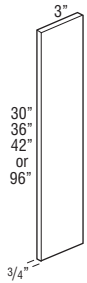
F330

F336

F342

TF396FH

- 3/4" thick.
- Finished on front and two long edges (backs are not finished).



6" FILLER

Model

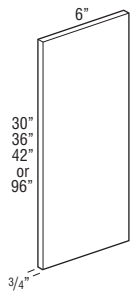
F630

F636

F642

TF696FH

- 3/4" thick.
- Finished on front and two long edges (backs are not finished).



END PANEL SKINS

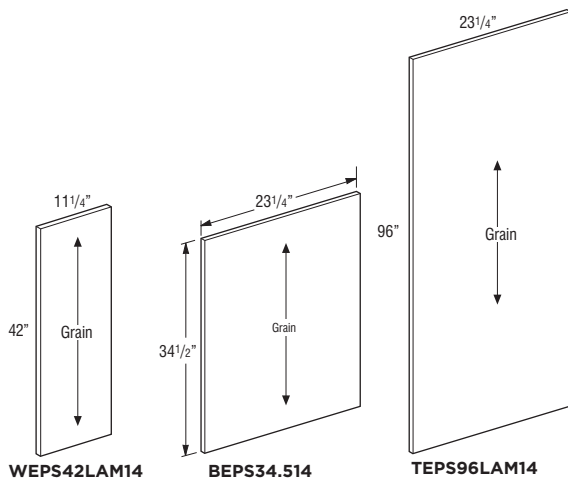
Model

WEPS42LAM14

BEPS34.514

TEPS96LAM14

- 1/4" thick laminated furniture board.

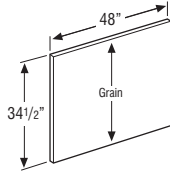


FINISHED BACK SKINS

Model

BP4834.514

- 1/4" thick laminated furniture board.
- Grain runs with 34.5".

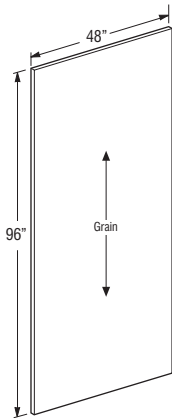


FINISHED BACK SKINS

Model

BP4896LAM14

- 1/4" thick laminated furniture board.
- Grain runs with 96".



TALL END PANELS

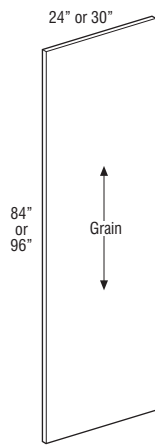
Model

TEP2484LAM

TEP2496LAM

TEP3096LAM

- 3/4" thick laminated furniture board.
- Panels are edgebanded on front edge.



BASE AND TALL PANELS WITH FILLER ATTACHED

Model

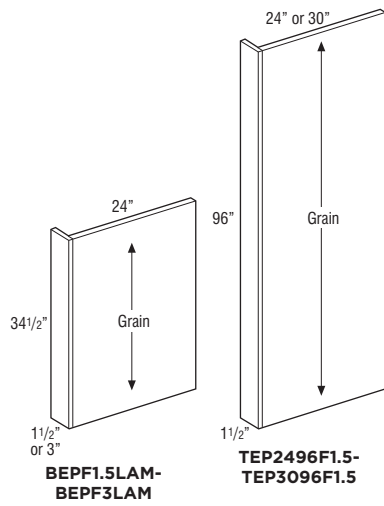
BEPF1.5LAM

BEPF3LAM

TEP2496F1.5

TEP3096F1.5

- 1/2" thick laminated furniture board.
- All panels have Natural Maple laminate interior.



WALL DECORATIVE DOOR END PANEL KIT

Model

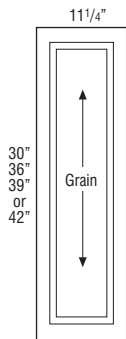
WED1230

WED1236

WED1239

WED1242

- Door panel kits include Wall End Panel Skin and door with attachment screws for field installation.
- Not available in Cottage Partial Trestle and White.

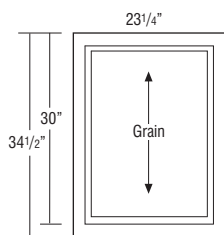


BASE DECORATIVE DOOR END PANEL KIT, SINGLE DOOR

Model

BEDSD

- Door panel kits include Base End Panel Skin and door with attachment screws for field installation.
- Not available in Cottage Partial Trestle and White.

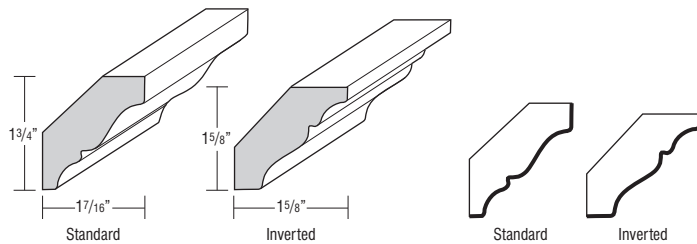


CROWN MOULDING, SOLID WOOD CROWN

Model

SWCRM8

- Face mounts on Partial Overlay doors.
- May be face mounted on Full Overlay if used with a cleat.
- One 8' section.
- Moulding can be used as standard or inverted.
- Finished edges indicated by bold lines on side view drawings.

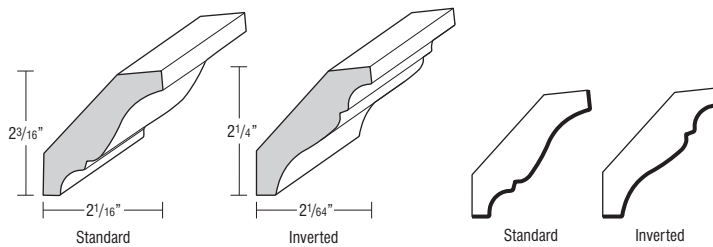


CROWN MOULDING, SOLID WOOD LARGE CROWN

Model

SWLCRM8

- Face mounts on Partial Overlay doors.
- May be face mounted on Full Overlay if used with a cleat.
- One 8' section.
- Moulding can be used as standard or inverted.
- Finished edges indicated by bold lines on side view drawings.

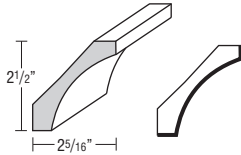


CROWN MOULDING, SMALL COVE CROWN

Model

SMCOVECROWN8

- One 8' section.
- Finished edges indicated by bold lines on side view drawings.

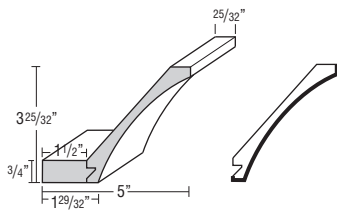


CROWN MOULDING, COVE CROWN

Model

COVECROWN8

- One 8' section.
- Cleat shipped unattached can be used for top mount or face frame applications.
- Finished edges indicated by bold lines on side view drawings.

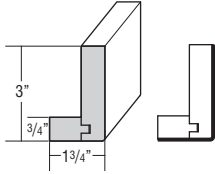


STARTER MOULDING, SHAKER

Model

STRS8

- One 8' section.
- Finished edges indicated by bold lines on side view drawings.

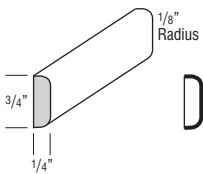


ACCENT MOULDING, FLAT SCRIBE

Model

SM8

- One 8' section.
- Finished edges indicated by bold lines on side view drawings.

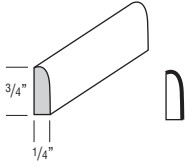


ACCENT MOULDING, SMALL SCRIBE

Model

SSM8

- One 8' section.
- Finished edges indicated by bold lines on side view drawings.

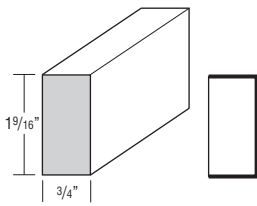


ACCENT MOULDING, LIGHT BAFFLE

Model

LB2

- One 8' section.
- Finished edges indicated by bold lines on side view drawings.

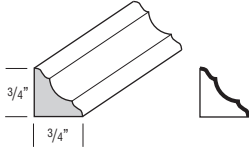


CORNER MOULDING, INSIDE CORNER

Model

ICM8

- One 8' section.
- Finished edges indicated by bold lines on side view drawings.

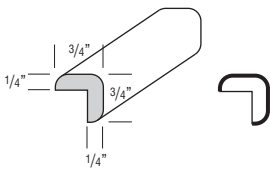


CORNER MOULDING, OUTSIDE CORNER

Model

OCM8

- One 8' section.

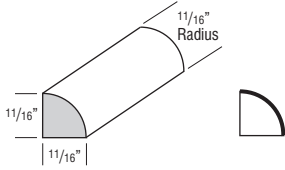


CORNER MOULDING, QUARTER ROUND

Model

QRM

- One 8' section.
- Finished edges indicated by bold lines on side view drawings.



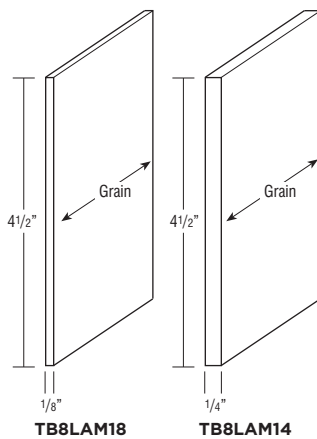
TOEBOARD

Model

TB8LAM18

TB8LAM14

- One 8' section.
- TB8LAM18: 1/8" laminated furniture board.
- TB8LAM14: 1/4" laminated furniture board.



STRAIGHT VALANCE / BASEBOARD

Model

VV48

VV96

- Trimmable.
- Profiled bottom edge 3/4" thick.

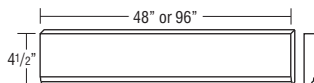


TABLE OF CONTENTS - ACCESSORIES AND HINGES

Roll Tray Kits	79
Tilt-out Trays	80
Bumper Pads	80
Drawer Guide Kits	81
Stain, Paint, & Touch-up Tools	82
Hinges	83

ROLL TRAY KITS

Model

RT15WD

RT18WD

RT21WD

RT24WD

RT27WD

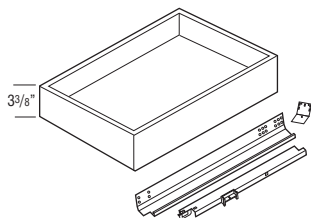
RT30WD

RT33WD

RT36WD

RT42WD

- 5/8" solid-wood dovetail roll tray with QuietClose, undermount, full extension guides.
- RT15WD-RT36WD kits contain 1 roll tray, roll tray brackets, hardware, and screws.
- RT42WD kits contain 2 roll trays, roll tray brackets, hardware, and screws.
- Exterior dimensions of roll trays are 21" deep x 3 3/8" tall (fits standard 24" deep cabinet).



Width	Application
15"	B15, B15FH, B1532.5
18"	B18, B18FH, B1832.5, U18
21"	B21, B2132.5, B21FH
24"	B24, B24FH, B2432.5, U24
27"	B27
30"	B30, B30FHB, B3032.5, U30
33"	B33
36"	B36, B36FH, B3632.5
42"	B42

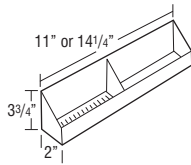
TILT-OUT TRAYS

Model

TOT15

TOT18

- TOT15: 11" w x 2" d x 3 3/4" h
- TOT18: 14 1/4" w x 2" d x 3 3/4" h
- Kit includes two white plastic trays and one pair of tilt-out hinges that attaches to the inside of the false panel.
- One tilt-out tray per false panel on cabinets less than 30" wide and greater than 36" wide, two tilt-out trays attached to one false panel on 30"-36" wide cabinets.



Cab Width	TOT Size	Cabinets
24"	TOT18	SB24, VSB2432.521, VSB243418, VSB243421
27"	TOT18	SB27
30"	TOT15	SB30, VSB3032.521, VSB303421
33"	TOT15	SB33
36"	TOT18	SB36, VSB3632.521, VSB363421
42"	TOT18	SB42

BUMPER PADS

Model

BUMPERPADS

- Package of 25.

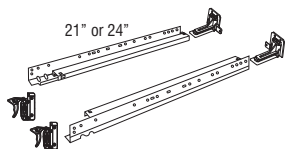
DRAWER GUIDE KITS

Model

DGK21PG

DGK24PG

- Undermount full extension, QuietClose guide.
- Kit includes guide hardware for one drawer box (cabinets and drawer members, sockets and screws).
- Dimension refers to cabinet depth.



STAIN & PAINT

Model

QUARTCOLOR

SSC

SSCCLEAR

- Wiping stain can be sprayed at low pressure.
- SSC is a 384 mL aerosol can available in Paint colors.
- SSCCLEAR is a 384 mL aerosol can in clear.

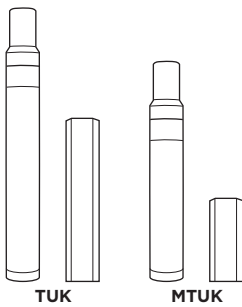
TOUCH-UP KIT

Model

TUK

MTUK

- TUK includes touch-up marker and a fill stick.
- MTUK includes small touch-up marker and a small fill stick.

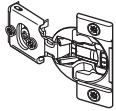


PARTIAL OVERLAY HINGE

Model

38NPOHINGE

- Partial Overlay 107° Hinge, 6-way adjustable with integrated QuietClose.
- Sold in pairs.
- For use on Partial Overlay Styles, Full Overlay Diagonal Wall Cabinets and Angled Corner Sink Fronts.

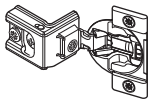


FULL OVERLAY HINGE

Model

38CFOHINGE

- Full Overlay 107° Hinge, 6-way adjustable with integrated QuietClose.
- Sold in pairs.

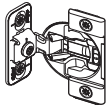


FULL OVERLAY HINGE

Model

38BFOVHINGE

- Full Overlay face mount 107° Hinge, 4-way adjustable with integrated QuietClose.
- Sold in pairs.
- For use on OC3D cabinets.



HINGE ANGLE RESTRICTION CLIP

Model

HINGERESCLIP

- For use in applications with cabinets installed at varying depths to prevent the door damage caused by opening into an adjacent cabinet.
- Restricts hinges to 86° opening capability.
- Works only with the 38NPOHINGE and 38CFOHINGE.
- Not recommended for cabinets with roll trays installed in partial overlay styles.
- Sold in pairs.



HINGE SHIM

Model

HINGESHIM5

- Install between the face frame and hinge to allow additional adjustment of doors.
- Can be used to reduce gap between butt doors.
- Pack of 5 plastic shims.
- Compatible with all hinges except face-mount.



Thomasville®

CABINETRY

Your work day is filled with enough hassles, Thomasville Cabinetry believes your cabinet order shouldn't be another one. Let our experts help you!

Your Dedicated Customer Service Team:

Phone: 1.800.317.0510

Fax: 888.202.1192

Email: elements@masterbrand.com

Hours: Monday - Friday 8:00 AM to 6:00 PM EST

Saturday 9:00 AM to 1:00 PM EST

Rep Name:

Phone Number:



Styles, product availability and construction may vary slightly from those shown in this book due to material availability and/or design evolution. Specifications are subject to change without notice. Customer service is available if your design requires verification of product availability and specifications.

Product photography and illustrations have been reproduced as accurately as printing technologies permit. To ensure highest satisfaction, we strongly recommend you view an actual sample for best color, wood grain and finish representation.

Thomasville™ has a Limited Lifetime Warranty.

For terms and conditions, please visit: www.thomasvillecabinetry.com/about#limited-lifetime-warranty

Front cover image: EVERLY Sterling, COTTAGE PARTIAL Trestle AND COTTAGE FULL White

Thomasville™ is a trademark of HHG IPCo, LLC. ©HHG IPCo, LLC. thomasville.com



Part of the
MasterBrand™
Family

thomasvillecabinetry.com

#thomasvillecabinetry

© 2022 MasterBrand Cabinets, Inc., All rights reserved.